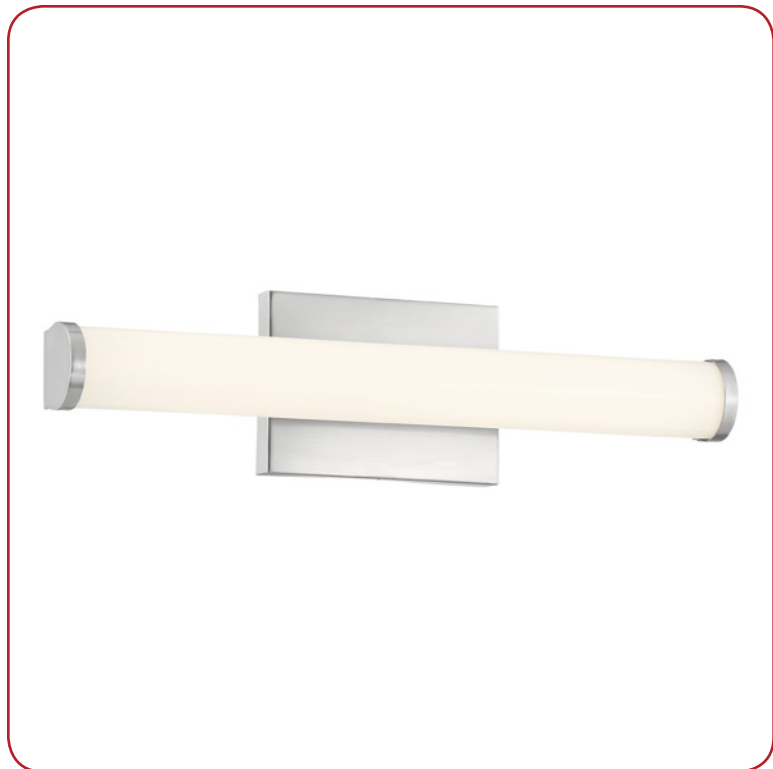


Model No :: **62516LEDD-BS/ACR**
 Name :: Arc



Project Name :: _____
 Location :: _____
 Type :: _____
 Quantity :: _____
 Notes :: _____

Product Information

Product ID :: 62516
 UPC Code :: 641594229066
 Mounting Type :: Wall
 Finish :: Brushed Steel (BS)
 Diffuser :: Acrylic Lens (ACR)
 Alt. Finishes :: Brushed Steel (BS)
 Alt. Diffusers :: Acrylic Lens (ACR)

Product Dimensions

Fixture	Canopy
Length :: N/A	Length :: 0.75"
Width :: 18"	Width :: 6.25"
Diameter :: N/A	Diameter :: N/A
Extension :: 2.75"	Height :: 4.5"
Height :: 4.5"	
Overall Height :: N/A	



Technical Specifications

Qualifications

Location Rating :: Damp
 Certification :: ETL Listed (US/Canada)
 IES File ::
 JA8 Compliant :: Yes
 Energy Star :: No
 ADA Compliant :: Yes
 Marine Grade :: No
 Emergency Lighting :: No
 Warranty :: 5 Year Limited

Specifications

Frame Material :: Metal
 Diffuser Material :: Acrylic
 Voltage :: 120v
 Lamping Type :: Dedicated LED
 Lamping Base :: SSL
 Lamp Quantity :: 1
 Lamp Wattage :: 20 W
 Total Wattage :: 20w
 Lamps Included :: Yes
 J-Box Type :: Standard

Photometrics

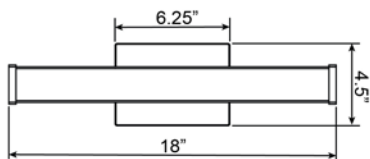
CCT :: 3000
 CRI :: 90
 Wattage :: 20w
 Nominal Lumens :: 1800Lm
 Delivered Lumens :: 1387Lm

Recommended Dimmers

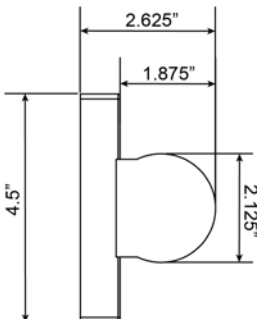
(ELV) LUTRON Caseta PD - 6WCL; (ELV) LUTRON Maestro CL MACL-153M; (ELV) LUTRON Maestro MRF2-6CL; (TRIAC) LUTRON Diva DVCL-153P

Additional Items :: 0

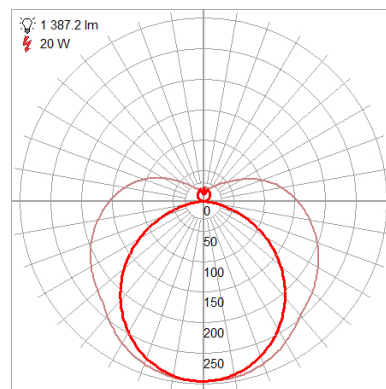
Line Drawing #1



Line Drawing #2



IES File



Toll Free 800-828-5483 • www.AccessLighting.com

14410 Myford Road, Irvine, CA 92606

The information provided is subject to change without notice. ©2020 Access Lighting Corporation. All Rights Reserved
 Rev. 202004 Filename:: 62516LEDD-BS_ACR.pdf

