

Model No :: **62573LEDD-MBL/ACR**  
 Name :: Citi



Project Name :: \_\_\_\_\_  
 Location :: \_\_\_\_\_  
 Type :: \_\_\_\_\_  
 Quantity :: \_\_\_\_\_  
 Notes :: \_\_\_\_\_

**Product Information**

Product ID :: 62573  
 UPC Code :: 641594238136  
 Mounting Type :: Wall  
 Finish :: Matte Black (MBL)  
 Diffuser :: Acrylic Lens (ACR)  
 Alt. Finishes :: Antique Brushed Brass (ABB);  
 Brushed Steel (BS); Matte Black  
 (MBL)  
 Alt. Diffusers :: Acrylic Lens (ACR)

**Product Dimensions**

Fixture	Canopy
Length :: 0	Length :: 0
Width :: 48"	Width :: 0
Diameter :: 0	Diameter :: 0
Extension :: 2.5"	Height :: 0
Height :: 5.5"	
Overall Height :: 0	



**Technical Specifications**

**Qualifications**

Location Rating :: Damp  
 Certification :: ETL Listed (US/Canada)  
 IES File ::  
 JA8 Compliant :: No  
 Energy Star :: No  
 ADA Compliant :: No  
 Marine Grade :: No  
 Emergency Lighting :: No  
 Warranty :: 5 Year Limited

**Specifications**

Frame Material :: Metal  
 Diffuser Material :: Acrylic  
 Voltage :: 120v  
 Lamping Type :: Dedicated  
 LED  
 Lamping Base :: SSL  
 Lamp Quantity :: 1  
 Lamp Wattage :: 35 W  
 Total Wattage :: 35w  
 Lamps Included :: Yes  
 J-Box Type :: Standard

**Photometrics**

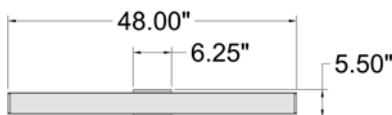
CCT :: 3000  
 CRI :: 90  
 Wattage :: 35w  
 Nominal Lumens :: 2450Lm  
 Delivered Lumens :: 2314Lm

**Recommended Dimmers**

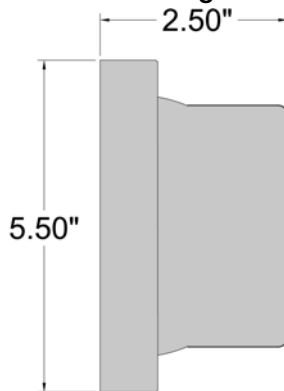
(ELV) LUTRON Caseta PD - 6WCL; (ELV) LUTRON Maestro CL MACL-153M; (ELV) LUTRON Maestro MRF2-6CL; (TRIAC) LUTRON Diva DVCL-153P

Additional Items :: 0

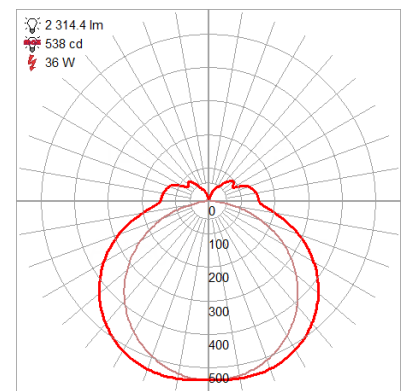
**Line Drawing #1**



**Line Drawing #2**



**IES File**



**Toll Free 800-828-5483 • www.AccessLighting.com**

14410 Myford Road, Irvine, CA 92606

The information provided is subject to change without notice. ©2020 Access Lighting Corporation. All Rights Reserved  
 Rev. 202004 Filename: 62573LEDD-MBL\_ACR.pdf

