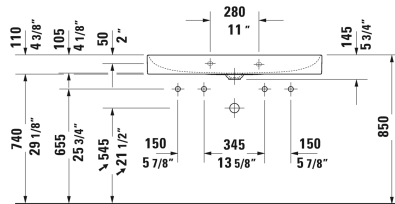
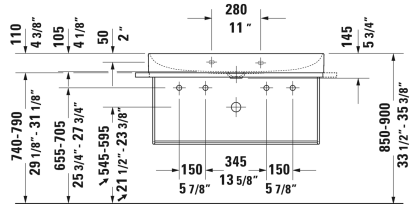
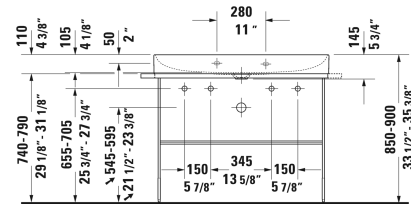
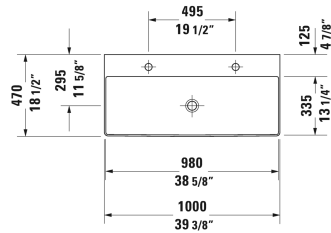


**DuraSquare Furniture washbasin # 2353100043**

| < 39 3/8" Inch > |



Furniture washbasin	Dimension	Weight	Order number
without overflow, with faucet deck, ceramic covered slotted waste included, underside fully glazed, hardware included, wall-mounted, 39 3/8" Inch			
<b>Colors</b>			
00 White			
<b>Variant</b>			
● _ _ ●	39 3/8" x 18 1/2" Inch	50.5 lb	2353100043
<b>Infobox</b>			
For glass inserts matching to furniture lacquer finishes, please see page XXX, Metal console: Towel rail can be mounted right or left , Made of DuraCeram			
Sanitary ceramics with the special WonderGliss surface finish will remain clean and attractive-looking for a long time to come. When ordering WonderGliss please add a "1" as eleventh digit to the model number.			
Towel rail square tube 1/2", Chrome, for washbasin # 235310	37 1/8" Inch	1.5 lb	003119
Design Siphon		3.3 lb	005036
<b>Suitable products</b>			
Metal console floorstanding ** height adjustable +2", hardware included, for washbasin # 235310, towel rail right or left, reversible, 41 7/8" x 17 3/4" Inch	41 7/8" x 17 3/4" Inch		003103
Metal console wall-mounted ** hardware included, for washbasin # 235310, towel rail right or left, reversible, 41 7/8" x 17 3/4" Inch	41 7/8" x 17 3/4" Inch		003104

**DuraSquare Furniture washbasin # 2353100043**

|&lt; 39 3/8" Inch &gt;|

Glass inserts safety glass, for metal console # 003103, 003104, 38 1/4" x 15" Inch	38 1/4" x 15" Inch	009965
Vanity unit wall-mounted 1 pull-out compartment, 23" x 18 1/8" Inch	23" x 18 1/8" Inch	XS4061
Vanity unit wall-mounted 1 pull-out compartment, 38 3/4" x 18 1/8" Inch	38 3/4" x 18 1/8" Inch	XS4063
Vanity unit wall-mounted 2 drawers, upper drawer including cut-out for siphon and siphon cover, 38 3/4" x 18 1/8" Inch	38 3/4" x 18 1/8" Inch	XS4163
Vanity unit floorstanding 2 pull-out compartments, integrated legs with height adjustment, 38 3/4" x 18 1/8" Inch	38 3/4" x 18 1/8" Inch	XS4444

*All drawings contain the necessary measurements which are subject to standard tolerances. They are stated in inch & mm and are non-binding. Exact measurements, in particular for customized installation scenarios, can only be taken from the finished ceramic piece.*