

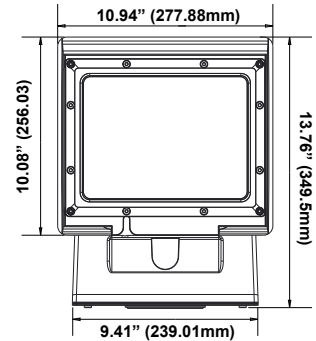
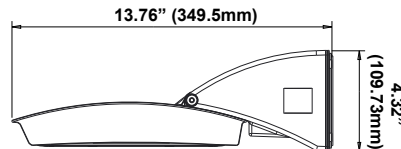


ADJUSTABLE WALL MOUNT LUMINAIRE

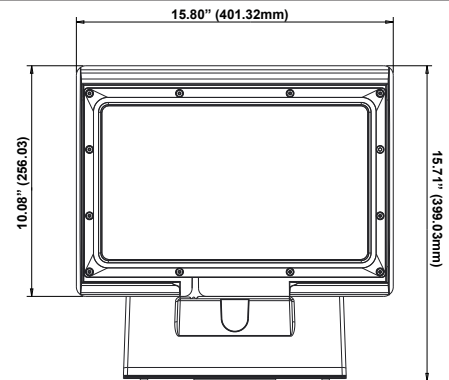
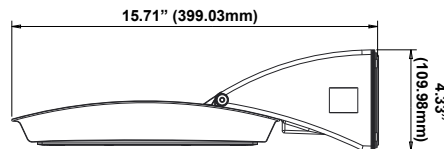
Thoughtfully designed for downlighting, the **MPulse Wall Mount** features an adjustable head that enables its use as an open face or cutoff fixture. It takes just one person to install and service the MPulse Wall Mount luminaire. The back plate mounts to the surface and allows for the wall mount to hang for easy wiring. A hinged back cover provides access to the driver for quick and easy replacement in the field.



Visual Comfort (VC)



28W & 55W



100W

100-300W



For additional 100-300W fixtures, please reference the [MPulse Area Light](#) with knuckle surface mount.

PERFORMANCE:

- Trade Agreements Act (TAA) compliant
- Available in lumen packages of 3000, 6000, and 11500 lumen
- LEDs have a calculated lumen maintenance value of > 93% (L93) at 100,000 hours calculated at 25°C
- 120-277V dimming standard. 347-480V options available

DESIGN:

- 0-45 degree field adjustable head in steps (15°, 30°, 45°)

OPTICS:

- Available in Type III and Type IV optics
- Visual comfort available in 28W and 55W

OPTIONS:

- 120-277V External Button Photocell
- High/Low/Off PIR fixture integrated photo/motion sensor compatible with FSIR-100 remote control

FINISHES:

- Satin bronze finish standard
- Also available in silver finish

CONSTRUCTION:

- Die Cast Aluminum housing
- Tempered Glass

MOUNTING:

- Designed to mount to standard 3.5" or 4" J-box
- Uniquely designed for ease of installation by one person

ENVIRONMENT:

- Wet location listed per UL standards
- IP66 rating

PHOTOMETRICS:

All IES files available online.

Please see page 3 for some Iso-footcandle layouts

WARRANTY:

10-year standard warranty with labor allowance* (further details available at www.maxlite.com/warranties)

*Warranty Limitations: Product must be rated for the application per the Product Data Sheet (PDS); operated ≤16 hrs/day; in ambient of -29°F to 104°F.

*Up to \$25/unit; labor allowances of up to \$500/unit available for purchase - contact MaxLite representative for details.



ADJUSTABLE WALL MOUNT LUMINAIRE

CONTROLS:

120-277VAC Photocontrol: Universal voltage photocontrols turn fixture on and off based on footcandle levels to help conserve energy during daylight hours. The operating temperature of the photocontrol is -30°F-120°F. Photocell mounted external.

Photo/Motion Sensor: The Wattstopper FSP-211 uses passive infrared (PIR) sensing technology to react to changes in infrared energy (i.e. moving body heat) within the coverage area. This slim, low-profile sensor is designed for installation inside the bottom of a light fixture body and is ideal for outdoor environments. The sensor operates at 120V/230V-240V and single phase 277V. The motion sensor is fully adjustable with high and low dimmed light level options with optional dusk to dawn control. Sensor can be combined with various lenses to operate at mounting heights from 8' to 40'. Factory settings can be adjusted via the FSIR-100, a wireless configuration tool.

Note that the sensor comes with photocell setting disabled and the FSIR-100 must be purchased if photocell capability is desired.

| MODEL SELECTION | | Typical order example: MP-SM100UT3-50B | | | | | | | |
|-----------------|---|--|--|-------------|------------------------------------|---|-----------|---|-------------------------------|
| MP | - | SM | | | | - | | | |
| FAMILY | - | SUB-FAMILY | WATTAGE | VOLTAGE | DISTRIBUTION | - | CCT | FINISH | OPTIONS |
| MP= MPulse | - | SM= Wall Mount | 28= 28W, 175W MH equivalent | U= 120-277V | T3= Type III | - | 30= 3000K | B= Bronze | (BLANK)= None |
| | | | 55= 55W, 250W MH equivalent | H= 347-480V | T4= Type IV | | 40= 4000K | S= Silver | MS= Photo/Motion Sensor |
| | | | 100= 100W, 400W MH equivalent | | †T5- VC8= Type V Visual Comfort | | 50= 5000K | | PC= 120-277V Button Photocell |
| | | | For additional 100-300W fixtures, please reference the MPulse Area Light with knuckle surface mount. | | | | | Contact MaxLite for additional finishes | |

Notes:

†* Available in 28W and 55W Only. Visual Comfort products are not DLC qualified.

‡ High voltage (347-480V) models are not DLC listed. Not all product variations listed on this page are DLC qualified. Visit www.designlights.org/search to confirm qualification.

SPECIFICATIONS:

| Item | Specification | 28 WATTS - DETAILS | 55 WATTS - DETAILS | 100 WATTS - DETAILS |
|---------------------|--|--|--------------------|---------------------|
| General Performance | Input Power (W) | 28 | 55 | 100 |
| | Lumens Delivered @4000K (lm) | 3,200 (2,500 VC) | 6,200 (4,600 VC) | 11,550 |
| | Lumens Delivered @5000K (lm) | 3,230 | 6,250 | 11,730 |
| | Efficacy (lm/W) | 116 (95 VC) | 113 (88 VC) | 121 |
| | CRI | ≥70 | | |
| | Calculated Lumen Maintenance (L93, TM-21 @ 25°C) | >100,000 hours | | |
| | Color Temperature | Available in 3000K**, 4000K & 5000K | | |
| | Backlight - Uplight - Glare | B1 - U0 - G1 | | B2 - U0 - G2 |
| Electrical | Input Voltage | 120-277V standard, 347-480V available | | |
| | Power Factor | >90% | | |
| | Surge Protection | 10kV Surge | | |
| Physical | Housing | Die-cast aluminum | | |
| | Mounting | Fits 3.5" or 4" J-boxes or mounts directly | | |
| | Weight | 9 lbs. | 13 lbs. | |
| Qualification | Qualifications | DLC Premium, cULus listed, DLC Standard, FCC | | |
| | Environment | Wet location rated, IP66 | | |
| | Warranty | 10-year standard warranty* | | |
| | Operating Temperature | -40°F - 122°F (-40°C - 50°C) | | |
| | Humidity | 10% - 90% RH, non condensing | | |

**3000K not DLC qualified.

MaxLite Makes It!

Don't see what you need? Additional wattages and specifications available upon request - contact your MaxLite rep!



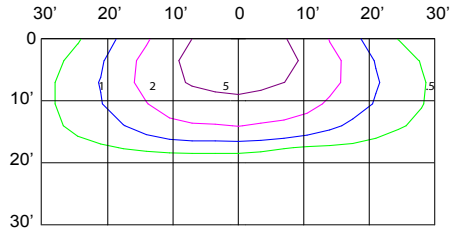
Phone: 1-800-555-5629 | Fax: 973-244-7333 | Web: www.maxlite.com | E-mail: info@maxlite.com

MAX17018

Revised: 02/16/22

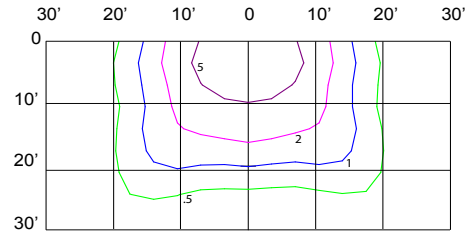
ADJUSTABLE WALL MOUNT LUMINAIRE

28W ISO-FOOTCANDLE LAYOUTS:



28W, Type III
3,000 Lumens
10' Mounting Height
Foot-candle Correction Factor:

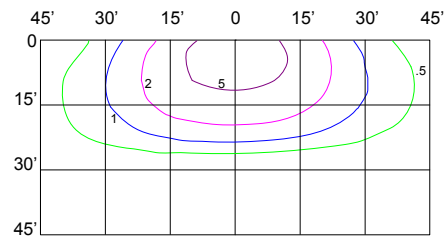
| | | | |
|--------------|-----|------|------|
| New Height: | 10' | 15' | 20' |
| Multiply by: | 1 | 0.44 | 0.25 |



28W, Type IV
3,000 Lumens
10' Mounting Height
Foot-candle Correction Factor:

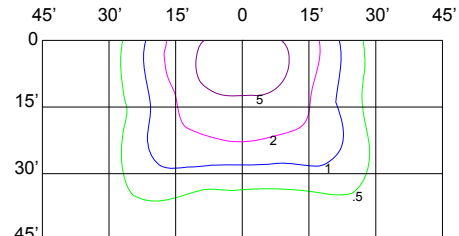
| | | | |
|--------------|-----|------|------|
| New Height: | 10' | 15' | 20' |
| Multiply by: | 1 | 0.44 | 0.25 |

55W ISO-FOOTCANDLE LAYOUTS:



55W, Type III
6,000 Lumens
15' Mounting Height
Foot-candle Correction Factor:

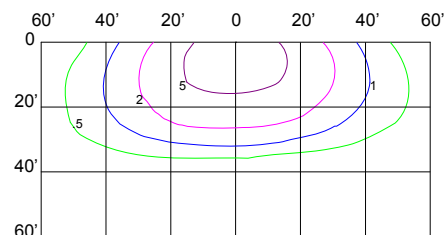
| | | | |
|--------------|------|-----|------|
| New Height: | 10' | 15' | 20' |
| Multiply by: | 2.08 | 1 | 0.56 |



55W, Type IV
6,000 Lumens
15' Mounting Height
Foot-candle Correction Factor:

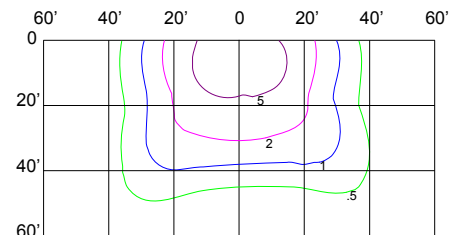
| | | | |
|--------------|------|-----|------|
| New Height: | 10' | 15' | 20' |
| Multiply by: | 2.08 | 1 | 0.56 |

100W ISO-FOOTCANDLE LAYOUTS:



100W, Type III
11,500 Lumens
20' Mounting Height
Foot-candle Correction Factor:

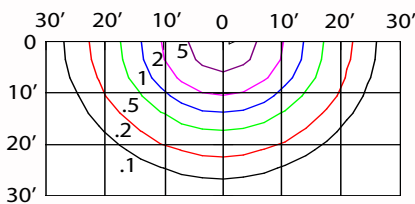
| | | | |
|--------------|------|-----|------|
| New Height: | 15' | 20' | 25' |
| Multiply by: | 1.78 | 1 | 0.68 |



100W, Type IV
11,500 Lumens
20' Mounting Height
Foot-candle Correction Factor:

| | | | |
|--------------|-----|-----|------|
| New Height: | 15' | 20' | 25' |
| Multiply by: | 1.8 | 1 | 0.63 |

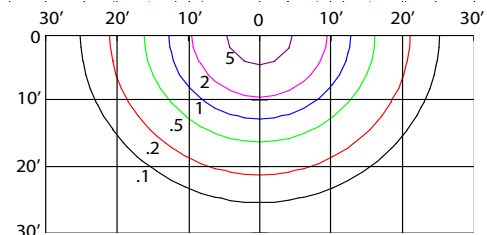
28W VISUAL COMFORT ISO-FOOTCANDLE LAYOUT:



28W, Type V - Visual Comfort
2467 Lumens
10' Mounting Height
Foot-candle Correction Factor:

| | | | |
|--------------|-----|-----|-----|
| New Height: | 10' | 15' | 20' |
| Multiply by: | 1 | 1.5 | 2 |

55W VISUAL COMFORT ISO-FOOTCANDLE LAYOUT:



55W, Type V - Visual Comfort
4627 Lumens
15' Mounting Height
Foot-candle Correction Factor:

| | | | |
|--------------|------|-----|------|
| New Height: | 10' | 15' | 20' |
| Multiply by: | 0.67 | 1 | 1.33 |

Lighting layouts and spacing criteria available upon request.