

ASSEMBLY INSTRUCTION**3FETL**

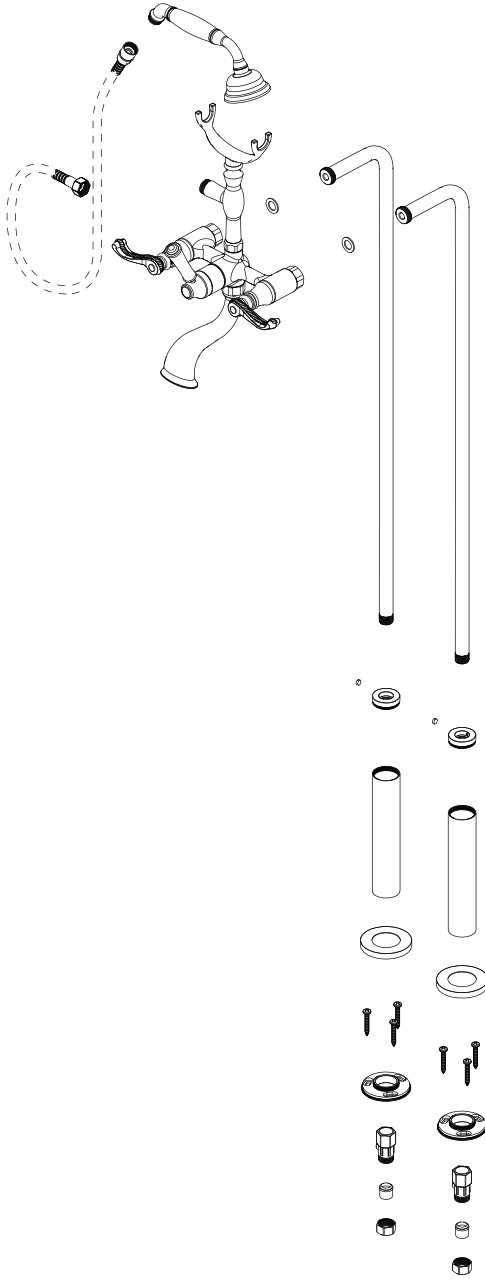
FLOOR MOUNT TUB FILLER WITH HAND HELD SHOWER

**3FETL****REMOVAL OF FIXTURE:**

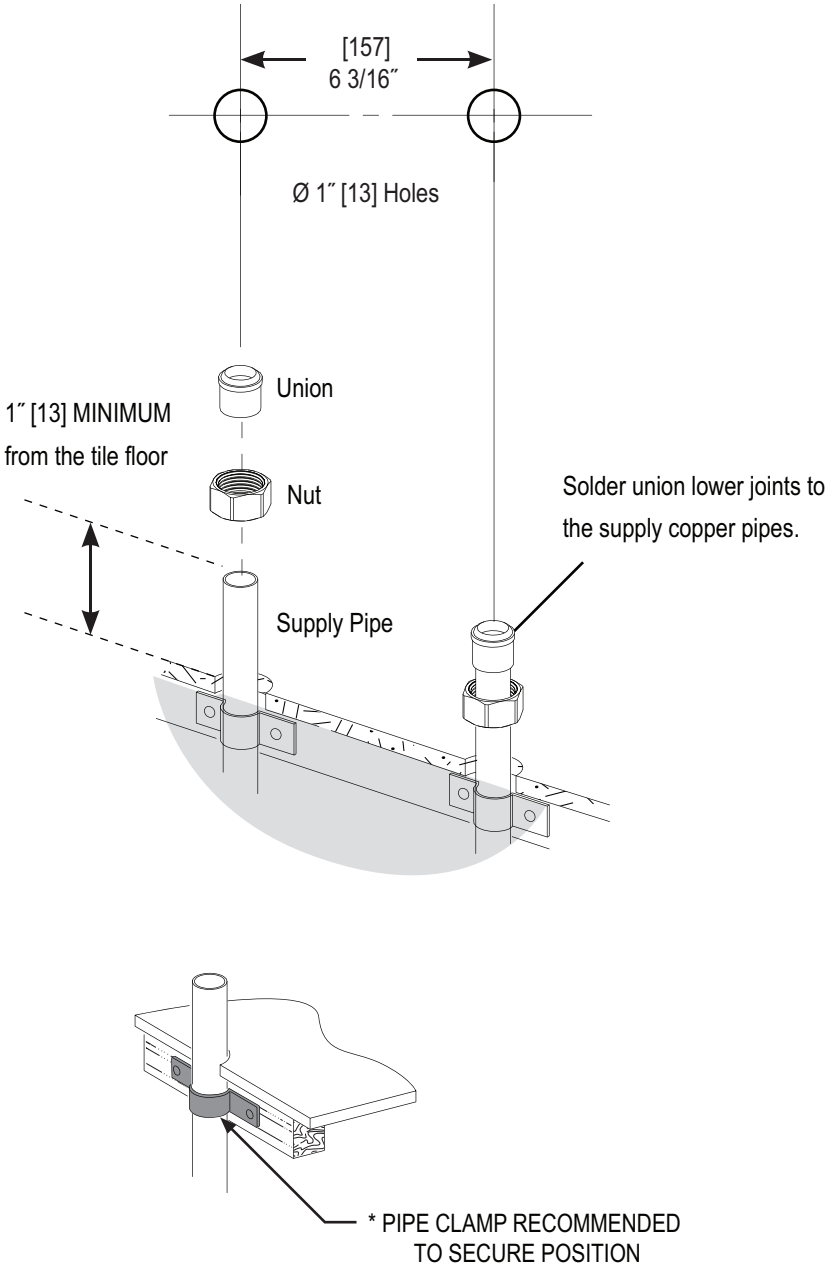
Always turn the water supply off before removing the existing fixture or disassembling a valve. Open both fixture handles to relieve water pressure and to ensure that the water has been successfully turned off.

CARE OF FIXTURE:

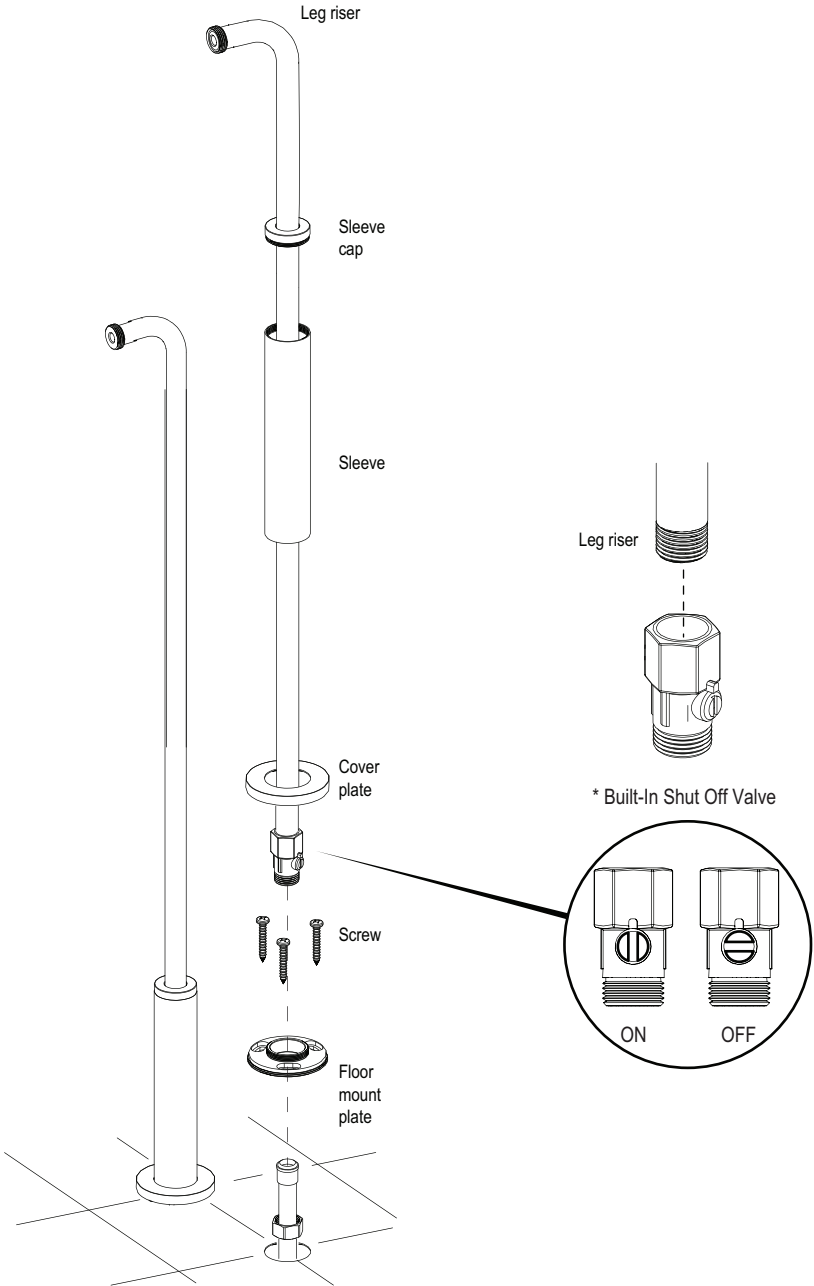
The use of warm water and a soft cloth is all that is required to clean Rubinet products. The patina of our living finishes (Oil Rubbed Bronze & Tuscan Brass) will change as a result of normal use. Applying Mineral Oil on occasion will create a softer look, subtle color changes and character.



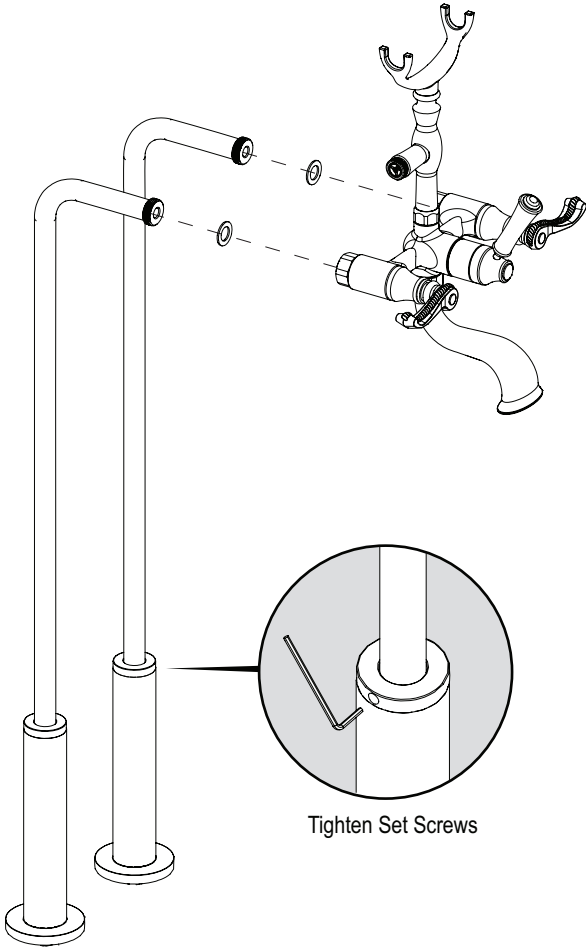
1



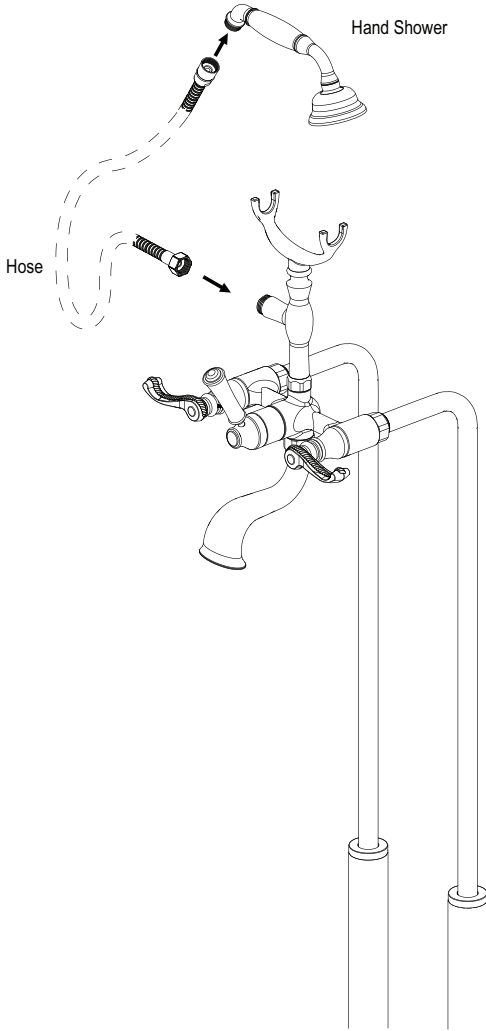
2



3

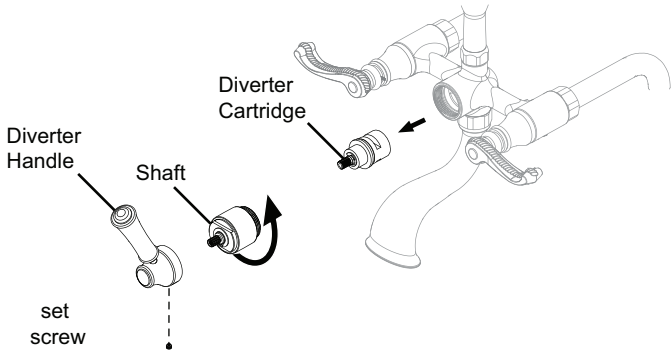


4

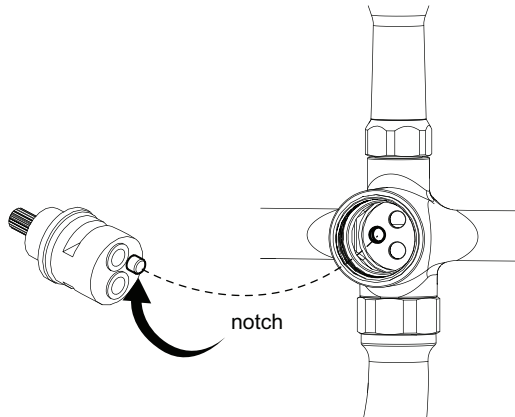


REMOVING DIVERTER CARTRIDGE

1. Remove the diverter handle. (center)
2. Remove the shaft using wrench.
3. Remove diverter cartridge.

**REPLACING DIVERTER CARTRIDGE**

Align notch to the matching hole to ensure proper assembly

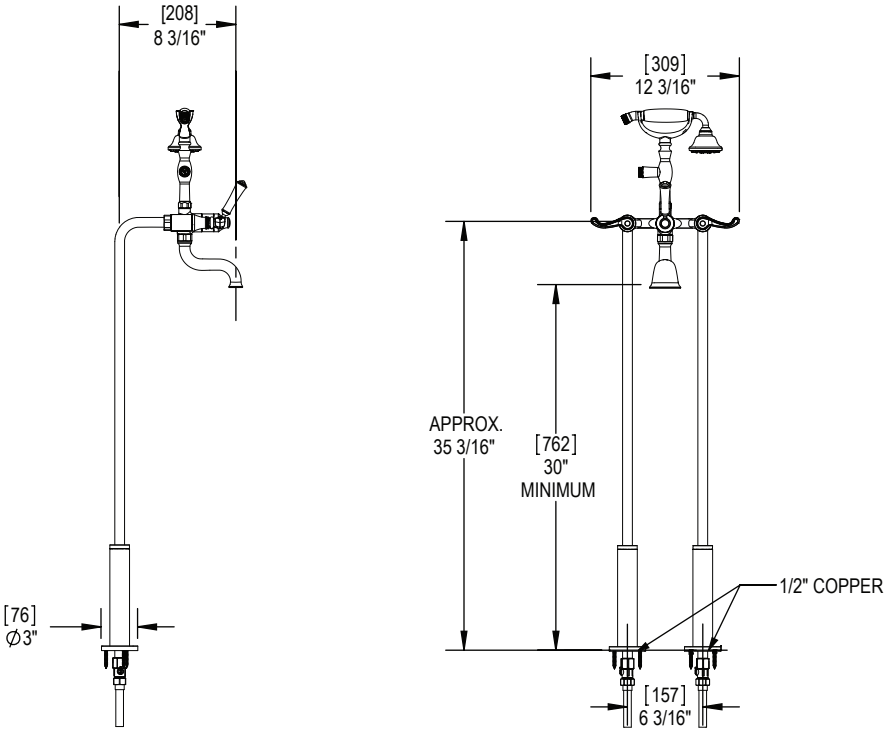


FEATURES:

- Brass construction with choice of 21 finishes
- Quarter Turn adjustable, ceramic disc cartridges
- Two Lever handles
- Hand Held Shower with 60" Hose (2.8 gpm @ 50 psi)
- Tub Spout (6.4 gmp @ 50 psi)
- Built-in double check valve

APPROVAL:

- AB1953 / NSF61
- ASME A 112.18.1
- CSA B125.1



CONTACT US:

If you need assistance with installation, replacement parts or have any questions regarding your Rubinet product, please call a Customer Service representative at: 905-851-6781 toll free 1-800-461-5901 or visit www.rubinet.com