

# TOTO®

# CST746CUMF(R)G.10

## Drake® 1G® Close Coupled Toilet, 1.0 & 0.8 GPF, 10" Rough-In

### FEATURES

- DYNAMAX TORNADO FLUSH® utilizes 360° cleaning power to reach every part of the bowl
- Ultra high-efficiency dual flush 1.0 & 0.8 GPF (3.8 & 3.0 LPF)
- CEFIONTECT® ceramic glaze prevents debris and mold from sticking to ceramic surfaces
- Design of the bowl reduces water flow resistance resulting in a quieter flushing sound
- Elongated front bowl, less seat
- Universal Height
- Chrome plated trip lever
- 10" Rough-in
- Semi-concealed trapway

### MODELS

- **CST746CUMFG.10 (#01)**  
With CEFIONTECT ceramic glaze without seat
- **CST746CUMFRG.10 (#01)**  
Same as CST746CUMFG.10 except right hand trip lever

### COMPONENTS

- **CT746CUFG.10**  
Elongated bowl with CEFIONTECT
- **ST746UMA**  
Tank and cover only
- **ST746UMR**  
Tank and cover only with right-hand trip lever

### OPTIONAL COMPONENTS

- **THU773#01**  
Trip Lever - Cotton
- **THU773#BN**  
Trip Lever - Brushed Nickel
- **THU773#PN**  
Trip Lever - Polished Nickel
- **THU774#01**  
Right Hand Trip Lever - Cotton
- **THU774#CP**  
Right Hand Trip Lever - Polished Chrome
- **THU774#BN**  
Right Hand Trip Lever - Brushed Nickel
- **THU774#PN**  
Right Hand Trip Lever - Polished Nickel

### COLORS/FINISHES

- #01 Cotton



- 1G One Gallon Per Flush
- CEFIONTECT
- DYNAMAX TORNADO FLUSH
- U Universal Height

### PRODUCT SPECIFICATION

The two-piece ultra high-efficiency DYNAMAX TORNADO FLUSH toilet shall be dual flush 1.0 GPF/0.8 GPF. Toilet shall be 10" rough-in. Toilet shall have optional CEFIONTECT ceramic glaze and be at Universal Height. Toilet shall have elongated front bowl and chrome plated trip lever. Toilet shall be TOTO Model CST746CUMF\_\_\_\_\_.

### CODES/STANDARDS

- Meets and exceeds ASME A112.19.2/CSA B45.1, ASME A112.19.14
- Certifications: IAPMO(cUPC®), EPA WaterSense, State of Massachusetts, and others
- Code Compliance: UPC, IPC, NSPC, NPC Canada, and others
- Legislative Compliance: California Green Building Code, City of Los Angeles Water Efficiency Ordinance, and others
- ADA compliant (when installed with trip lever located on the approach side)
- Complies with CA Prop 65 warning requirements



# CST746CUMF(R)G.10

## Drake® 1G® Close Coupled Toilet, 1.0 & 0.8 GPF, 10" Rough-In

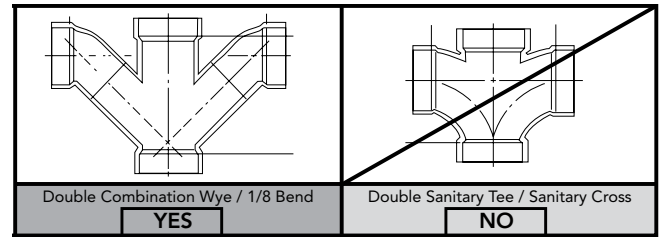
### SPECIFICATIONS

<b>Water Use</b>	1.0 & 0.8 GPF (3.8 & 3.0 LPF)
<b>Flush System</b>	DYNAMAX TORNADO FLUSH®
<b>Min. Water Pressure</b>	8 psi (Flowing)
<b>Water Surface</b>	5-5/8" x 4-1/8"
<b>Trap Diameter</b>	2-1/2"
<b>Rough-in</b>	10"
<b>Trap Seal</b>	2-1/8"
<b>Warranty</b>	One Year Limited Warranty
<b>Material</b>	Vitreous China
<b>Shipping Weight</b>	CT746CUFG.10 64 lbs. ST746UMA 35 lbs.
<b>Shipping Dimensions</b>	CT746CUFG.10 18-3/4" L x 10-1/2" W x 18-1/8" H ST746UMA 18-3/4" L x 8-3/8" W x 16" H

### INSTALLATION NOTES

#### Back-to-Back Toilet Installations:

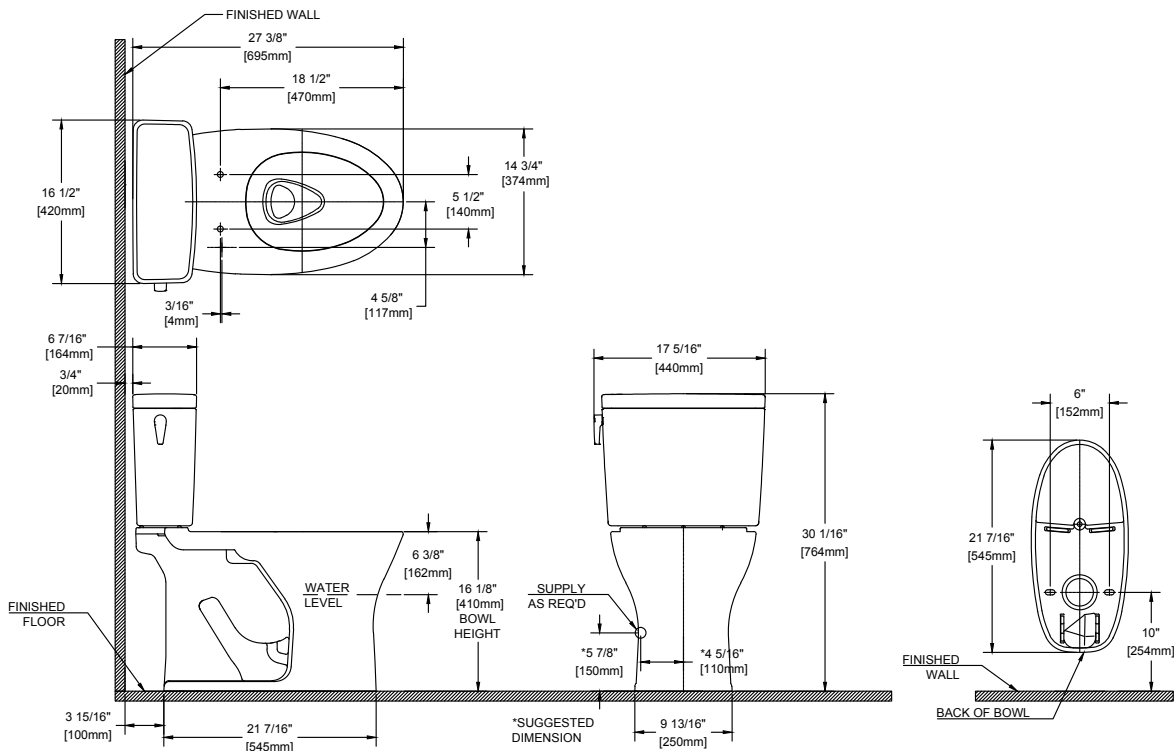
TOTO recommends the use of a nationally listed, double sanitary tee-wye only, in vertical waste stacks, in accordance with the stipulations noted in the majority of nationally recognized plumbing codes.



To maintain adequate wall gap between the back of the tank and wall, mount the floor flange at a nominal 10" rough-in distance.

Ultra-low high efficiency toilets require a system with adequate supplemental flows from other water usage fixtures and a 4" ID drainline with minimum 2% slope and maximum linear runs of 60ft. Fixture Dimensions shown are nominal.

### DIMENSIONS



**TOTO®**

*These dimensions and specifications are subject to change without notice*